

## PERFORMANCE

### Processor

Intel® Core™ i7-1355U, 10C (2P + 8E) / 12T, P-core 1.7 / 5.0GHz, E-core 1.2 / 3.7GHz, 12MB

### Graphics

Integrated Intel Iris® Xe Graphics

### Chipset

Intel SoC Platform

### Memory

8GB Soldered DDR4-3200 + 8GB SO-DIMM DDR4-3200

### Memory Slots

One memory soldered to systemboard, one DDR4 SO-DIMM slot, dual-channel capable

### Max Memory

Up to 16GB (8GB soldered + 8GB SO-DIMM) DDR4-3200 offering

### Storage

1TB SSD M.2 2242 PCIe® 4.0x4 NVMe®

### Storage Support

Up to two drives, 2x M.2 SSD  
• M.2 2242 SSD up to 1TB

### Storage Slot

Two M.2 2280 PCIe 4.0 x4 slots

### Card Reader

microSD Card Reader

### Optical

None

### Audio Chip

High Definition (HD) Audio, Realtek® ALC3287 codec

### Speakers

Stereo speakers, 2W x2, Dolby® Atmos®

### Camera

FHD 1080p with Privacy Shutter

### Microphone

2x, Array

### Battery

Integrated 60Wh

### Max Battery Life

MobileMark® 2018: 11.7 hr  
Local video (1080p) playback@150nits: 15.8 hr

### Power Adapter

65W USB-C® (3-pin)

## DESIGN

### Display

14" FHD (1920x1080) IPS 300nits Anti-glare Display Covered by Anti-fingerprint Glossy Touch Glass, 100% sRGB

### Touchscreen

OGM, 10-point Multi-touch

### Keyboard

Backlit, Czech / Slovak

### Case Color

Mineral Grey

### Surface Treatment

Anodizing Sandblasting

### Case Material

Aluminium (Top), Aluminium (Bottom)

### Pen

ThinkBook Yoga® Integrated Smart Pen

### Dimensions (WxDxH)

320 x 216 x 16.9 mm (12.60 x 8.62 x 0.67 inches)

### Weight

Starting at 1.5 kg (3.3 lbs)

## SOFTWARE

### Operating System

Windows® 11 Pro, Czech / Slovak / English

### Bundled Software

Office Trial

## CONNECTIVITY

### Ethernet

No Onboard Ethernet

### WLAN + Bluetooth®

Wi-Fi® 6, 11ax 2x2 + BT5.1

### Standard Ports

- 1x USB 3.2 Gen 1
- 1x USB 3.2 Gen 1 (Always On)
- 1x USB-C 3.2 Gen 2 (support data transfer, Power Delivery 3.0 and DisplayPort™ 1.4)
- 1x Thunderbolt™ 4 / USB4® 40Gbps (support data transfer, Power Delivery 3.0 and DisplayPort 1.4)
- 1x HDMI®, up to 4K/60Hz
- 1x microSD card reader
- 1x Headphone / microphone combo jack (3.5mm)

## SECURITY & PRIVACY

### Security Chip

Discrete TPM 2.0 Enabled

### Fingerprint Reader

Touch Style, Integrated in Power Button

### Physical Locks

Kensington® Nano Security Slot™, 2.5 x 6 mm

### Other Security

Camera privacy shutter

## MANAGEABILITY

## SERVICE

### Base Warranty

1-year, Courier or Carry-in

### Included Upgrade

1Y Premier TP Entry WHB (CPN) (5WS1B09493), 3Y Onsite upgrade from 1Y Courier/Carry-in Windchill (CPN) (5WS1L51818)

## ACCESSORIES

## CERTIFICATIONS

### Green Certifications

- EPEAT™ Gold Registered
- ENERGY STAR® 8.0
- ErP Lot 6
- ErP Lot 26
- RoHS compliant

### Other Certifications

TÜV Rheinland® Low Blue Light (Software Solution)

### Mil-Spec Test

MIL-STD-810H military test passed

## MODEL

<b>TopSeller</b>	: Yes	<b>Announce Date</b>	: 2023-02-28
<b>EAN / UPC / JAN</b>	: 196804356105	<b>End of Support</b>	: 2029-09-28



- Lenovo reserves the right to change specifications or other product information without notice.
- Product image on this page is a sample, it may not match the real color of this model
- Battery life is an estimated maximum. Actual battery life may vary based on many factors, including screen brightness, active applications, features, power management settings, battery age and conditioning, and other customer preferences

## Premier Support - A direct 24x7x365 line to our most elite technicians.



Advanced technical support, 24x7x365, in more than 100 markets



Technical Account Managers for proactive relationship and escalation management



Comprehensive hardware & OEM software support



Priority on service delivery and repair parts



Single point of contact for simplified end-to-end case management



Lenovo Service Connect Portal for customized reporting and product support

## Accidental Damage Protection - Protection of your PC from the unexpected.

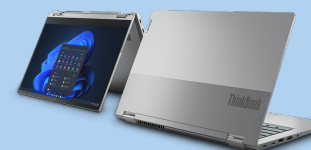
Experience shows that a significant portion of devices may be damaged (and not covered under warranty) in the first three years. Lenovo's Accidental Damage Protection service covers accidents beyond the system warranty such as drops, spills, bumps and even electrical surges. Make sure your new device has maximum protection, avoid unplanned costs and get peace of mind.

## Base Warranty - Included with the systems you purchase, default 1- or 3-year coverage window.

## Warranty Extensions & Upgrades - Service and protection that's right for your circumstances.

- Pick Up & Return Courier
- Onsite Support
- Technician Installed Customer
- Replaceable Unit Service
- International Warranty Upgrade

Lenovo may not offer the products, services or features discussed in this document in all regions. Lenovo may withdraw an offering at any time. Information is subject to change without notice. Consult your local representative for information on offerings available in your area. Lenovo reserves the right to change specifications or other product information without notice. Lenovo is not responsible for photographic or typographical errors. Lenovo provides this publication "as is" without warranty of any kind, either express or implied, including the implied warranties of merchantability or fitness for a particular purpose.



**Lenovo**

**PSREF**  
Product Specifications  
Reference